

2010

# The secret of connecting Rails to Microsoft SQL Server

Step by step, click by click



## Contents

Introduction .....	3
Installing Ruby .....	4
Opening your Ruby command prompt .....	8
Checking your PATH .....	8
Check your Ruby version .....	9
Checking your RubyGems version .....	9
Installing Rails .....	11
Installing SQLite .....	12
Installing Microsoft SQL Server Express .....	14
The SQL Adapter .....	22
Installing the Ruby DevKit .....	22
Installing Ruby ODBC .....	24
Installing the SQL Adapter .....	25
Rails demo .....	26
Setup the demo database .....	26
Create the Rails application .....	28
Quick Guide .....	34
Resources .....	35

## Introduction

This guide will take you step by step, click by click through the process of getting Ruby on Rails connected to Microsoft SQL server on Windows.

I'll point out any potential **GOTCHA!**s along the way, changing the whole process from one full of potential pitfalls (even for expert users) to a simple process anyone can repeat.

I am going to carry out the whole process on a freshly built Windows 7 virtual machine using the latest version of Ruby (1.9.2) and Ruby on Rails (3.0.1). Although this guide will be using Windows 7 with specific versions of Ruby and Rails there is no reason this won't work on other versions.

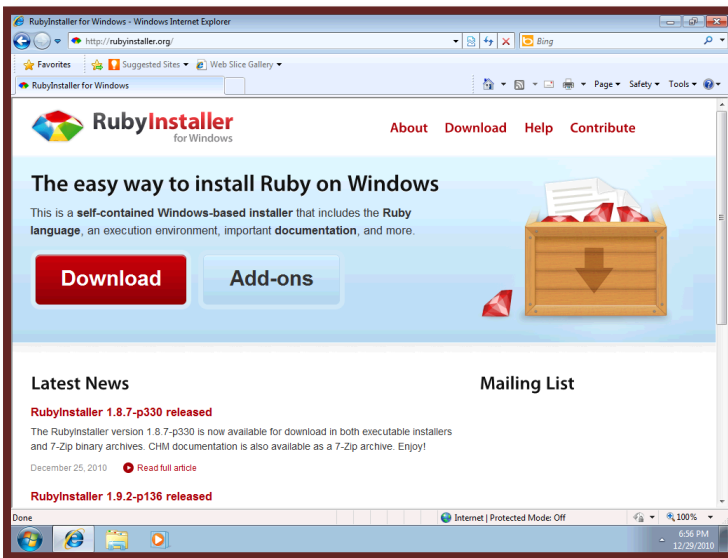
There are two routes through this guide, one is intended for users new to Ruby on Rails which literally takes you through the process step by step, click by click. The other is for experienced users giving you just the what you need to know to get you up and running as quickly as possible.

For the step by step guide continue reading.

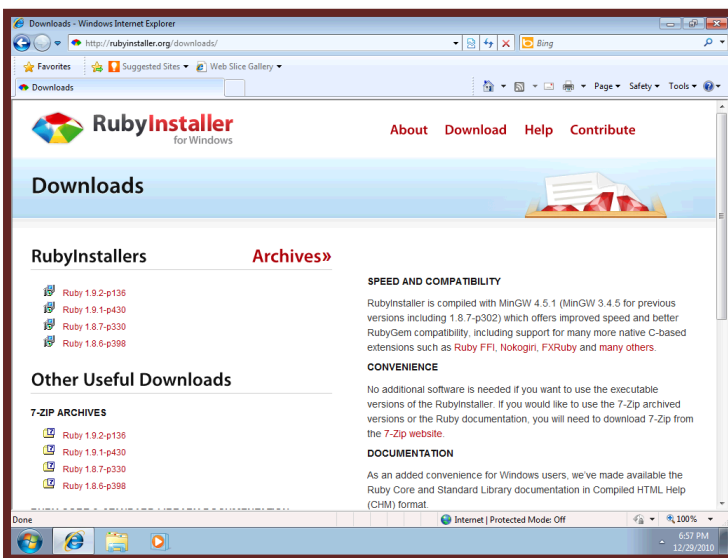
If you're a more experienced user you can jump directly to the Quick Guide

## Installing Ruby

The easiest way to install Ruby on Windows is via the RubyInstaller for Windows. Using Internet Explorer go to the website: <http://rubyinstaller.org/>



Clicking the big red **Download** button will take you to the download page.

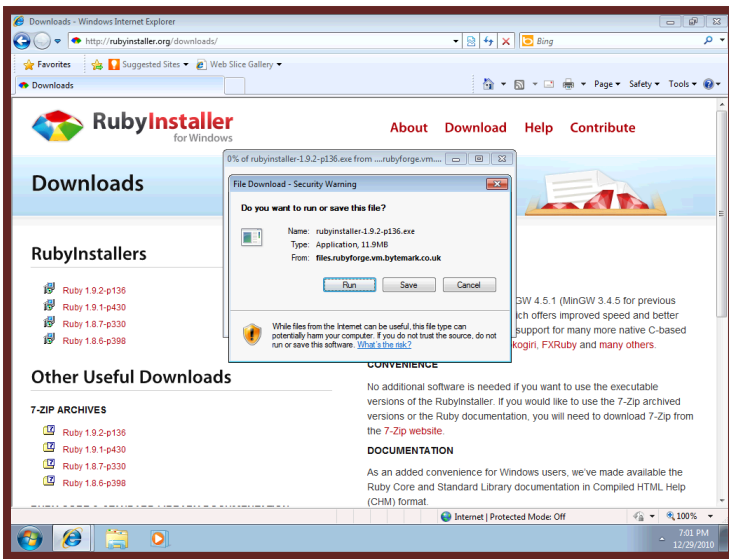


You want the latest stable version of Ruby, currently **Ruby 1.9.2-p136**. This can be downloaded by clicking the link **Ruby 1.9.2-p136** or downloaded directly using this web address:

<http://rubyforge.org/frs/download.php/73722/rubyinstaller-1.9.2-p136.exe>

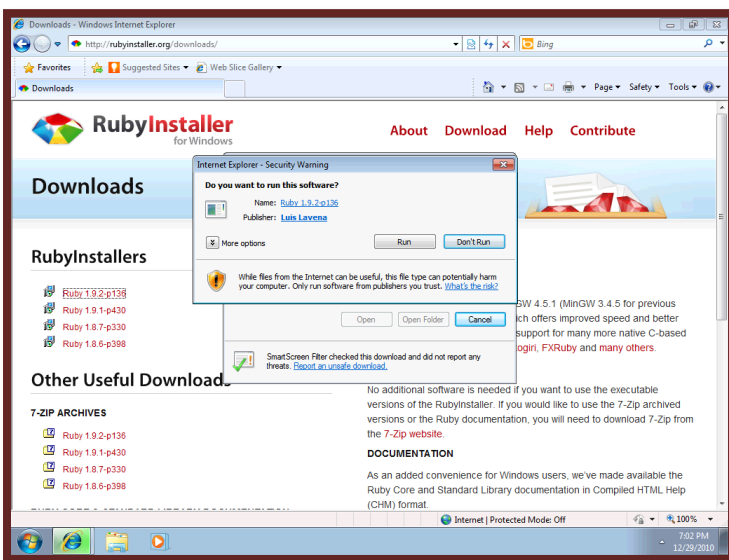
When downloading with Internet Explorer you will receive a warning as the installer is an executable (.exe) file. Don't worry this is normal, Internet Explorer is simply trying to protect you from malicious web sites. In this case you can ignore the warning as this is a trusted website.

Click the **Run** button to begin the Ruby install wizard.



Once you click the **Run** button the Ruby install wizard will begin downloading. This may take a while depending on your internet connection speed. Once the download is complete Internet Explorer may issue another warning. Again, as with the previous warning this is nothing to worry about.

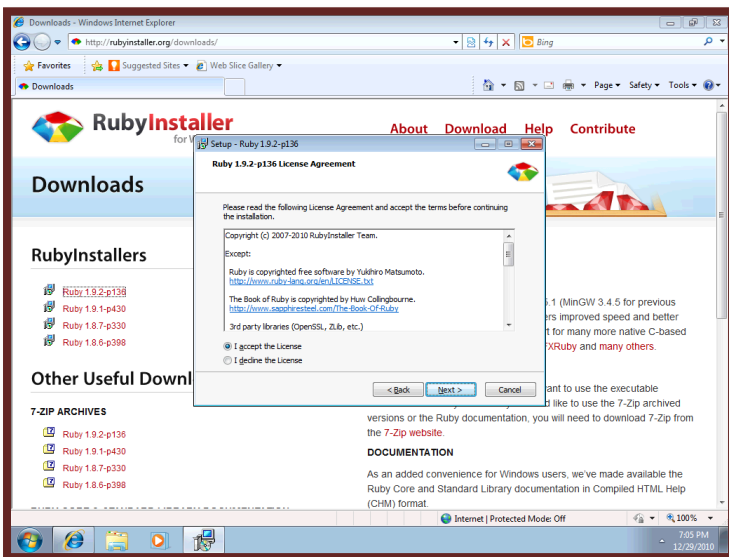
Click the **Run** button to begin the install:



You will now see a welcome message from the Ruby installer. Click the **Next >** button to begin the install.



You must accept the license agreement to continue the install. If you are happy with the license agreement, select the radio button labeled ***I accept the license*** and then click the **Next >** button.

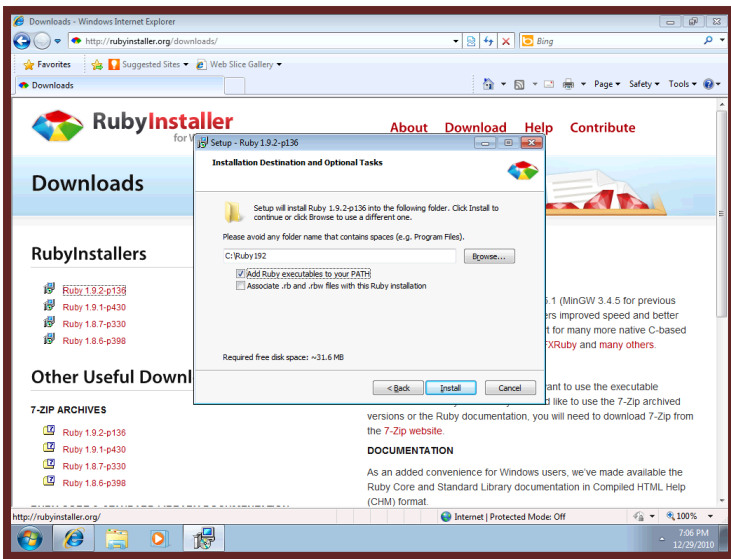


You'll now be asked where you'd like to install Ruby.

Stick with the default install dir of **C:\Ruby192**. Ruby does need to be added to your PATH, so make sure you tick the checkbox labeled **Add Ruby executables to your PATH**

**GOTCHA!** Adding Ruby to your PATH is a very important. Do not forget to tick this check box, otherwise you'll encounter problems later!

Finally click the **Install** button to finish the install.



When the wizard completes you will see a status message showing the install has been successful.

Click the **Finish** button and you're all done installing Ruby.

